

STAGE  
**ZERO**



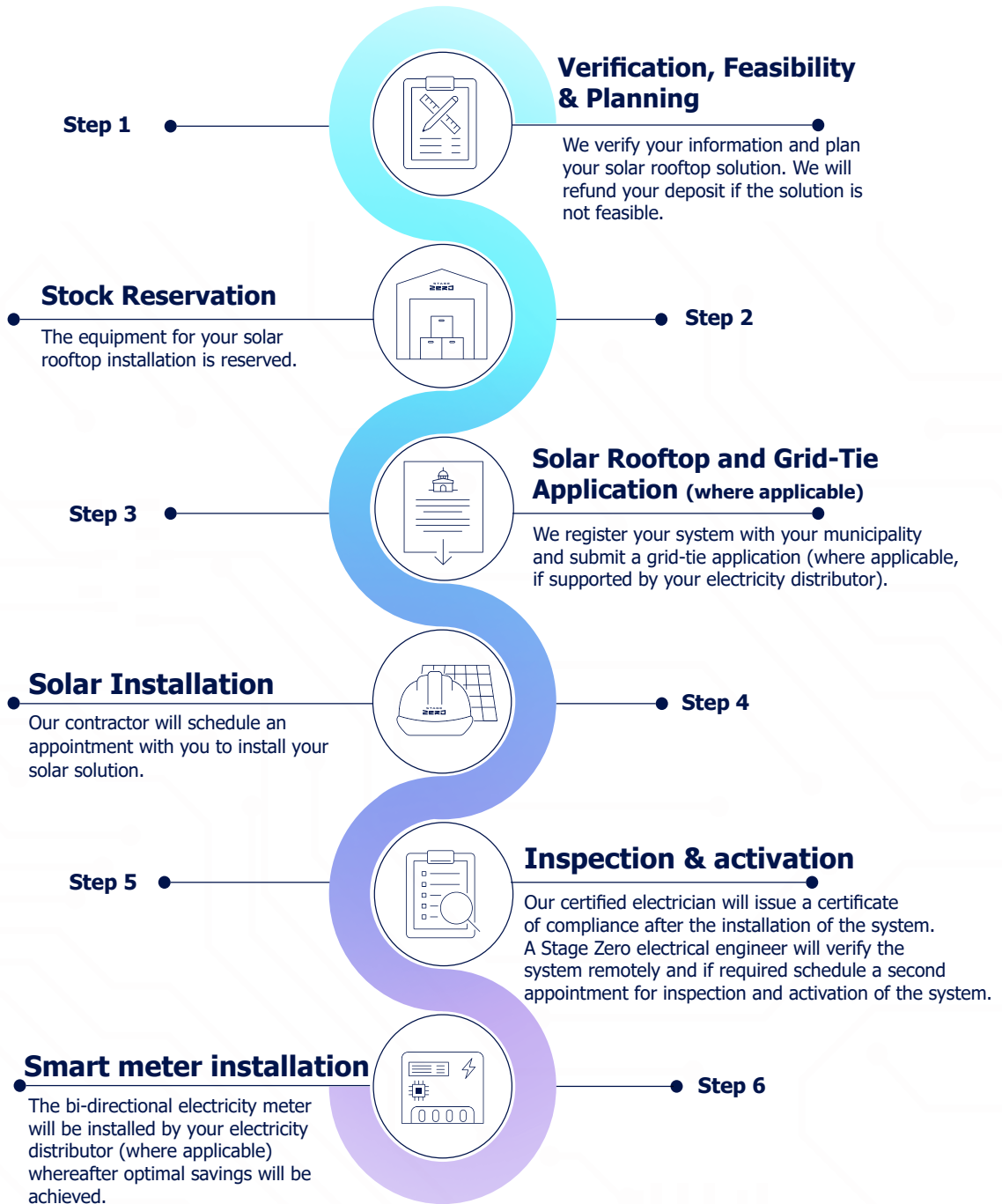
**Barbon**  
**What to Expect Next**



# CONTENTS

<b>1. TRACK MY ORDER STEPS</b>	<b>3</b>
.....	
<b>2. PRODUCT VIEW AND DIMENSIONS</b>	<b>4</b>
.....	
<b>3. DOCUMENTATION REQUIRED</b>	<b>5</b>
.....	
<b>4. INSURANCE</b>	<b>5</b>
.....	

## 1. Track My Order



## 2. Product View and Dimensions

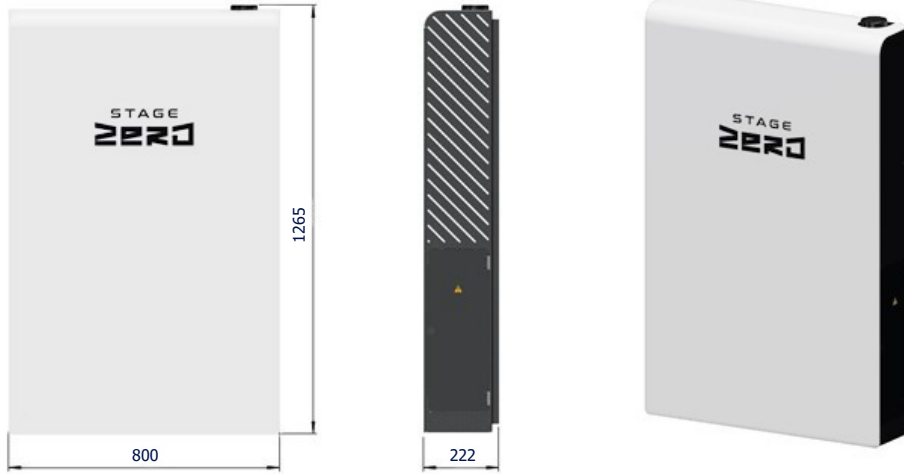


Figure 1: Faraday Unit

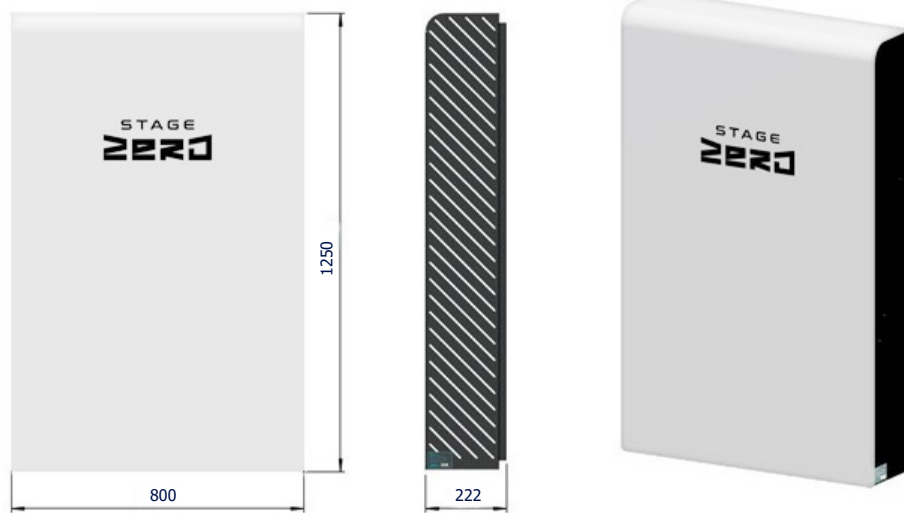


Figure 1: Akira Unit



1. Faraday (Inverter Enclosure)
2. Akira (Battery Enclosure)
3. Combiner Boxes
4. Trunking

**Not shown in illustration:**

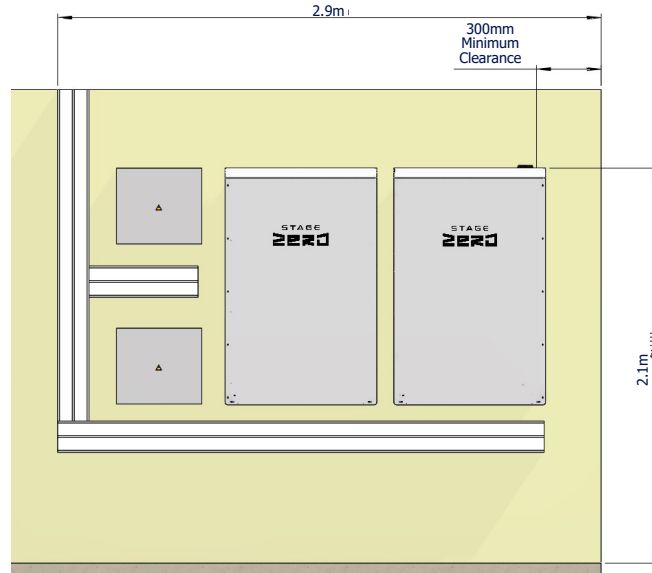
- Sub Distribution Board
- Solar Panel Array installation
- Earth Spike

Figure 2: Typical Facility Installation

### Standard Installation Dimensions (Excluding expansion kit)

**Suitable for the following:**

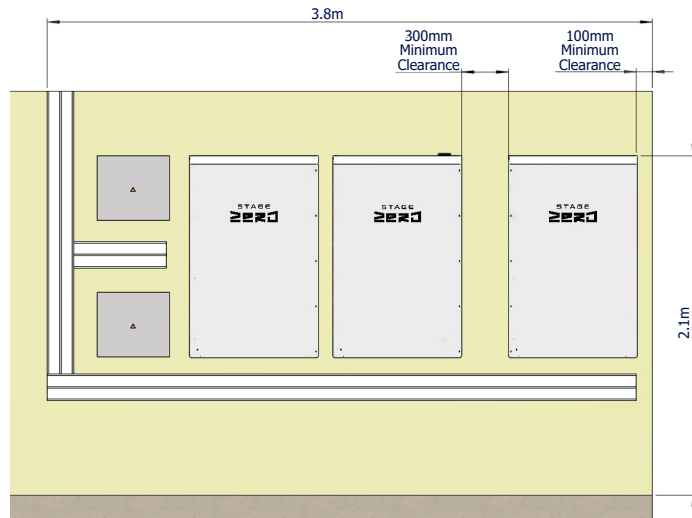
- Barbon XS1
- Barbon XS2
- Barbon XS3
- Barbon XS4
- Barbon S1
- Barbon S2
- Barbon S3
- Barbon S4
- Barbon M1
- Barbon M2
- Barbon M3
- Barbon L1
- Barbon L2
- Barbon XS1 Pro
- Barbon XS2 Pro
- Barbon XS3 Pro
- Barbon XS4 Pro
- Barbon S1 Pro
- Barbon S2 Pro
- Barbon S3 Pro
- Barbon M1 Pro
- Barbon M2 Pro
- Barbon L1 Pro



### Standard Installation Dimensions (With expansion kit)

**Suitable for the following:**

- Barbon M3 Pro
- Barbon L2 Pro



The area shown in the image above represents the standard (default) installation space required, which may vary slightly depending on the location.

## 3. Documentation Required

To be uploaded via the Customer Zone, if not yet provided: <https://customer.stagezero.co.za/login>

- ID/ Passport/ Refugee Documentation
- Proof of Physical Address
- Electrical Certificate of Compliance (not older than 2 years)
- Municipal utility bill
- Photo of DB (Distribution) board
- Photo of installation location where the Faraday and Akira enclosures will be installed
- If Post-Paid:
  - Your last four consecutive electricity bills
- If Pre-Paid:
  - Your last four consecutive pre-paid receipts

## 4. Insurance

It is important to note that you are responsible to insure the Stage Zero system for the value stipulated in your contract after the installation has been completed. You will be prompted to upload proof of insurance via the Customer Zone.